

STAINLESS STEEL & WASHDOWN DUTY DUMPER - QUOTATION WORKSHEET

COMPANY: _____
CONTACT: _____
QUOTE#: _____

LINE ITEM#: _____
QUANTITY: _____
DESIRED DELIVERY: _____

- * S.S. equipment and components are generally used for frequent washdown, wet, high-corrosive, and food processing applications.
- * This document is intended to help gather vital information surrounding the application, the load being handled, the specifications of the equipment, and features and options required to best meet customer needs. Please input/select info below.

APPLICATION / ENVIRONMENTAL CONDITION

Wet / Washdown Application Corrosive Environment Sanitary Criteria Extreme Temperature Condition

Description: _____

PRODUCT LOAD / CONTAINER BEING DUMPED

Description: _____

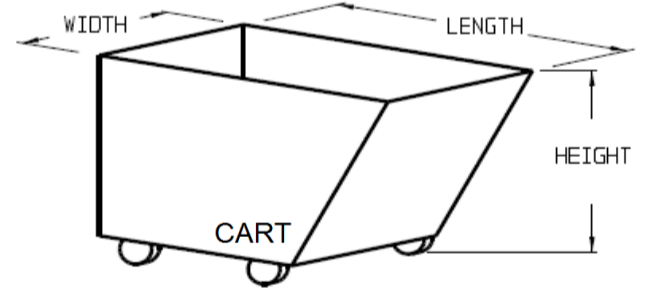
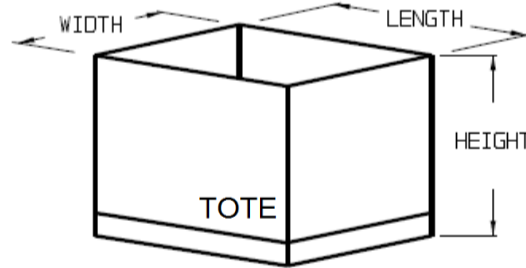
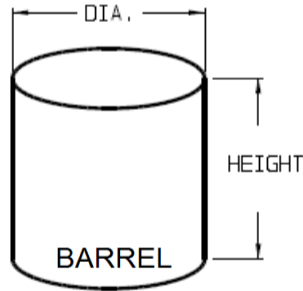
* Enter size based on how product sets in Dumper drum/box: Width = leading edge spanning across drum width, Length = side parallel with drum depth

Load Size (Max.): _____ in. Wide x _____ in. Long x _____ in. Height x _____ Weight/ea _____ Total Live Load

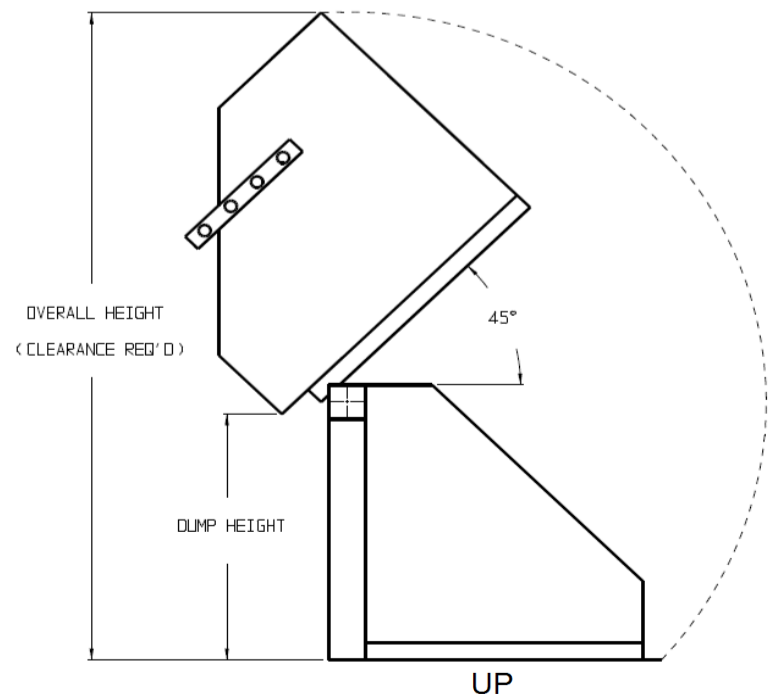
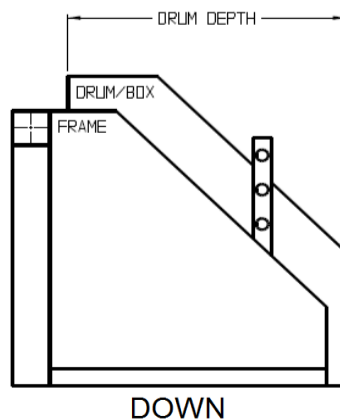
Load Size (Min.): _____ in. Wide x _____ in. Long x _____ in. Height x _____ Weight/ea _____ Total Live Load

Will Material Flow Freely While Being Dumped? YES NO - Explain: _____

PRODUCT LOAD EXAMPLES =>



DUMPER VIEWS =>



LOADING METHOD

- Fork Truck
- Pallet Jack
- Rolled On
- Other: _____

RETAINING METHOD

- Adj. Hold Down Bar (standard)
- Side Holds
- Forks
- Other: _____

RECEIVING RECEPTACLE

- Hopper
- Open Container
- Table
- Other: _____

Receptacle Opening: _____ in. Wide x _____ in. Long x _____ in. Height From Floor

DUMPER SPECIFICATIONS

Dumper Capacity (lbs): _____ Dump Height (in.): _____ Overhead Clearance (in.): _____

*standard 500-4000 lbs (specials up to 10,000 lbs)

*standard 36", 48", 60" and 72"

STANDARD PACKAGES

- Wipedown Series for Dry Cleanup:
 - * Industrial Designs
 - * Carbon Steel Drum & Frame Materials
 - * FDA Powder Coated Drum & Frame
 - * Epoxy Painted Hydraulic Cylinders
 - * Non-Washdown Motor
 - Washdown Series for Wet Cleanup:
 - * Washdown Designs
 - * 304 S.S. Mill Finish Drum & Frame Materials
 - * Epoxy Painted Hydraulic Cylinders
 - * Epoxy Painted Washdown Motor
 - Hygienic Series for Sanitary Cleanup:
 - * Hygienic Open/Cleanable Designs
 - * 304 S.S. Mill Finish Drum & Frame Materials
 - * S.S. Hydraulic Cylinders
 - * S.S. Washdown Motor
 - * FDA-H1 Lubricants
- * FDA-H1 Lubricants
 - * NEMA-1 Electrical/Control Items
 - * Stitch Welded Drum & Frame
 - * Welds Cleaned But Not Ground
 - * FDA-H1 Lubricants
 - * NEMA-4X Electrical/Control Items
 - * Stitch Welded Drum & Frame
 - * Welds Cleaned But Not Ground
 - * NEMA-4X Electrical/Control Items
 - * Continuously Welded Drum & Frame
 - * Drum Welds Coarse Ground & Cleaned
 - * Frame Welds Cleaned But Not Ground

DRUM / BOX CONSTRUCTION - (select if different than selected package spec's above)

- Carbon Steel FDA Powder Coated
- 304 S.S. Material
- 316 S.S. Material
- S.S. Mill Finish
- Glass Bead Blasted Finish
- Stitch Welded
- Continuously Welded
- * All Welds Cleaned - No Heat Tint (std.)
- Welds Cleaned But Not Ground
- Welds Coarse Ground & Cleaned

FRAME CONSTRUCTION - (select if different than selected package spec's above)

- Carbon Steel FDA Powder Coated
- 304 S.S. Material
- 316 S.S. Material
- S.S. Mill Finish
- Glass Bead Blasted Finish
- Stitch Welded
- Continuously Welded
- * All Welds Cleaned - No Heat Tint (std.)
- Welds Cleaned But Not Ground
- Welds Coarse Ground & Cleaned

HYDRAULIC POWER UNIT - (select if different than package)

- Non-Washdown Motor
- Epoxy Painted Washdown Motor
- S.S. Washdown Motor

HYDRAULIC CYLINDERS - (select if different than package)

- Epoxy Painted
- S.S.

POWER

- Supply Voltage:
- 115V 1-Phase
 - 230V 1-Phase
 - 208V 3-Phase
 - 230V 3-Phase
 - 460V 3-Phase
 - 575V 3-Phase

CONTROLS

- Up/Down Push Button Control Box (standard)
- Hand Pendant
- Foot Pedal
- Full "Auto Run" Controls

MISC. OPTIONS

- Debris Catch
- Discharge Chute
- Gated Enclosure
- Light Curtain
- Support Stand/Base: _____ in. Top of Stand
- Up/Down Limit Switches

Other (describe): _____
