

BUCKET CONVEYOR - FOOD HANDLING QUOTATION WORKSHEET

Company: _____

Line Item No.: _____

Contact: _____

Quantity: _____

Quote No.: _____

Date Required: _____

* This document is intended to help gather vital information surrounding the application, the load being handled/conveyed, the specifications of the material handling equipment, and equipment features and options required to best meet customer needs. Please input/select data below:

VITAL DATA

APPLICATION CONDITION:

- Dry Application
 Wet/Washdown Application
 High Pressure Washdown Application

APPLICATION DESCRIPTION: _____

PRODUCT TO CONVEY: _____

PRODUCT DIMENSIONS:

Product Size (Min.): _____ in. Wide x _____ in. Long x _____ in. Height x _____ Weight/ea. _____ Total Live Load

Product Size (Max.): _____ in. Wide x _____ in. Long x _____ in. Height x _____ Weight/ea. _____ Total Live Load

* Enter size based on how product sets in the buckets: Width = leading edge spanning across bucket, Length = side edge parallel with direction of flow

Production Rate: _____ lbs./hour Environment Temp.: _____ (F) degrees Bulk Density: _____ lbs/cu.ft.

Max. Load per Bucket: _____ lbs. Product Temp.: _____ (F) degrees Liquids Present: _____

OTHER SPEC'S: _____

CONVEYOR CONFIGURATIONS & DIMENSIONS

A = _____ ft. - _____ in. (Overall Length)

B = _____ in. (Top of Frame)

C = _____ in. (Discharge Height)

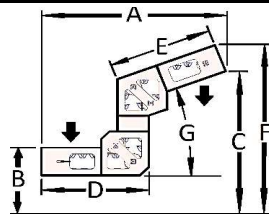
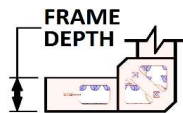
D = _____ ft. - _____ in.

E = _____ ft. - _____ in.

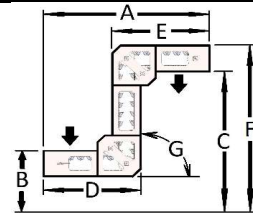
F = _____ ft. - _____ in. (Overall Height)

G = _____ (Degree Incline/Decline Angle)

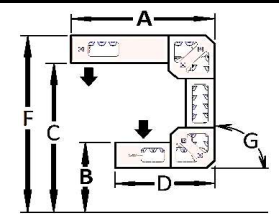
Note: (Standard Frame Depth = 24 in.)



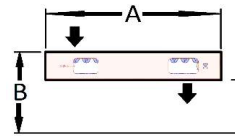
"C-Style" Lower



"Z-Style" Lower



"Inverted Z-Style" Lower

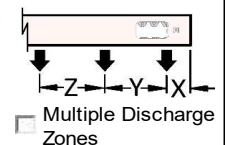


Horizontal

X = _____ (30 in. min.)

Y = _____ in.

Z = _____ in.



Multiple Discharge Zones

OTHER SPEC'S: _____

BUCKET SPECIFICATIONS

Note: All buckets on the conveyor require a metered feed (e.g. vibratory feeder, rotary valve, or similar device)

BUCKET WIDTH:

- 18" (Standard)
 12" (Special)
 24" (Special)
 Custom Width: _____ in.

BUCKET MATERIAL:

- Nylon FDA (Standard)
 304 SS (Special) Continuous Welds
 316 SS (Special) Continuous Welds
 Custom Mat'l: _____

BUCKET CENTERS: (Pitch)

- 9" (Standard)
 Custom Pitch: _____ in. (Requires Custom Buckets)

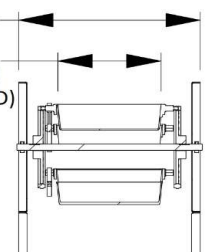
BUCKET CAPACITY: (Calculations are based on 60% Recommended Bucket Fill)

12" Bucket Width = 185 cubic inches
(Special)

18" Bucket Width = 285 cubic inches
(Standard)

24" Bucket Width = 385 cubic inches
(Special)

BW + 3 3/4"
 BUCKET WIDTH (BW)
 (18" STANDARD)



OTHER SPEC'S: _____

